

## Light efficiency:

**98 Lumen/Watt**

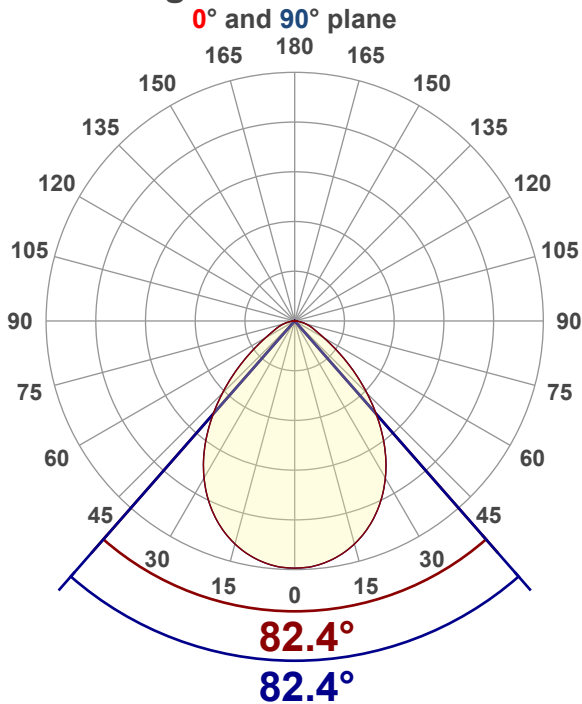
## Color temperature:

**3078 K**

## Light quality:

**CRI:94.9, R<sub>g</sub>:91.4, R<sub>f</sub>:99.1****P: 2 / V: - / F: 2****Output: 1441 lm****Peak: 803 cd****Power: 14.7 W****Voltage: 120 V****Current: 0.124 A****PF: 0.99****THD: 8.1 %**

## Angular Distribution



Product name:

**SLMB6-16W-CCT-XX - 3000K**

Test Date:

**11/20/2025**

Beam Angle (50% of the brightness of the centre):

**82.4°**

Field Angle (10% of the brightness of the centre):

**128.5°**

Cut Off Angle (2.5% of the brightness of the centre):

**161.1°**

## Beam Details

\*measured at centre of beam

Mounting Height (feet)/(meter)	Lux*	Footcandles*	Beam width (feet) / (meter)
4 ft / 1.2 m	540 lx	50 fc	7 ft / 2.1 m
8 ft / 2.4 m	135 lx	13 fc	14 ft / 4.3 m
12 ft / 3.7 m	60 lx	6 fc	21 ft / 6.4 m
16 ft / 4.9 m	34 lx	3 fc	28 ft / 8.5 m
20 ft / 6.1 m	22 lx	2 fc	35 ft / 10.7 m

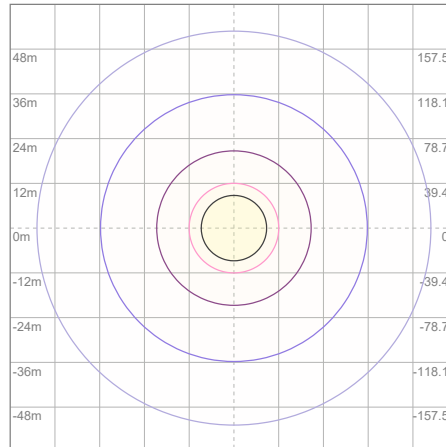
Beam center

# Photometric Testing Report

## Zonal Lumen Summary

Zone	Lumen	%Luminaire
0-30	586	40.67%
0-40	905	62.80%
0-60	1312	91.05%
60-90	128	8.88%
70-100	50.1	3.48%
90-120	0.243	0.02%
0-90	1440	99.93%
90-180	1.03	0.07%
0-180	1441	100.00%

## ISO Lux Diagram



Lux at center:	86 lx
3%	2.58 lx
5%	4.30 lx
10%	8.60 lx
30%	25.80 lx
50%	43.00 lx

**Conditions:**  
 Number of planes: 8  
 Lux distribution on a surface when lamp is mounted at 3.05 meters from the surface.

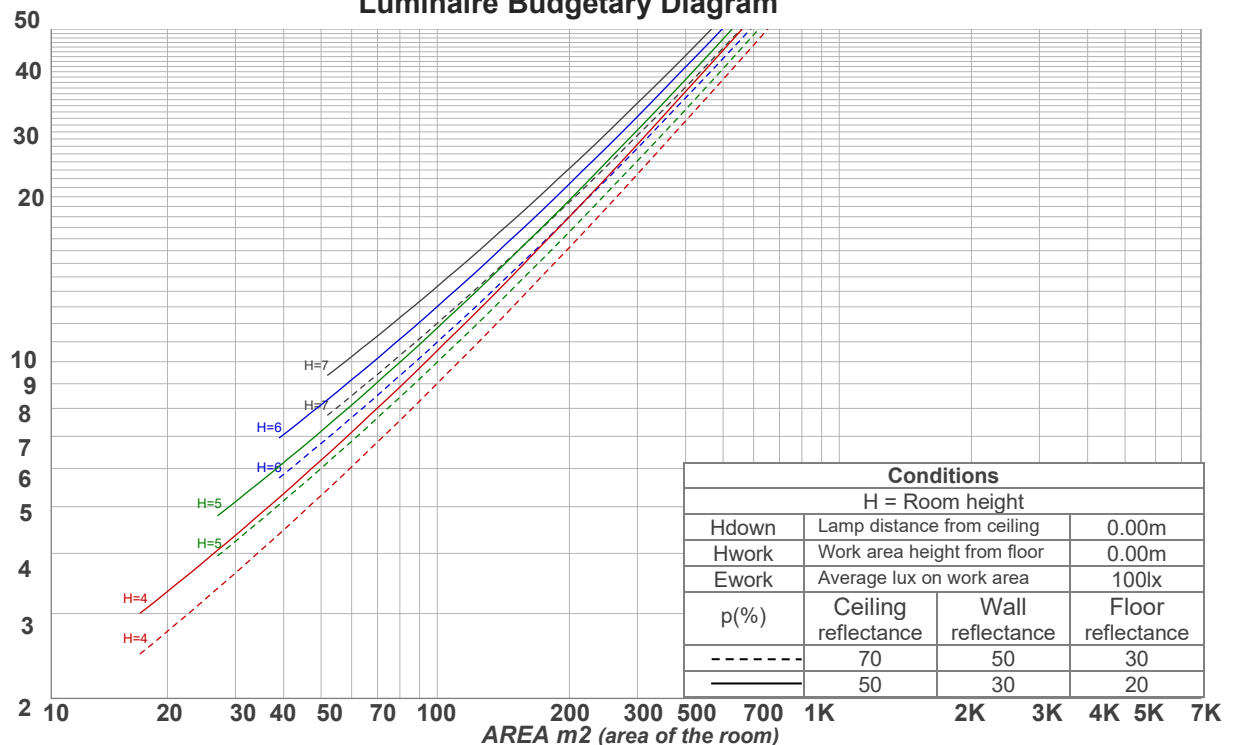
Mounting height: 3.05 meters (10 feet)

## Coefficients of Utilization

Ceiling reflectance	80				70				50			30			10			0
Wall reflectance	70	50	30	10	70	50	30	10	50	30	10	50	30	10	50	30	10	0
Floor reflectance	20	20	20	20	20	20	20	20	20	20	20	20	20	20	20	20	20	0
RCR	(RCR: Room Cavity Ratio) Room Values are expressed as percentage of Lumens delivered to the task surface																	
0	119	119	119	119	116	116	116	116	111	111	111	106	106	106	102	102	102	100
1	111	107	104	101	108	105	102	99	101	98	96	97	95	93	93	92	90	88
2	103	96	91	86	101	94	89	85	91	87	83	88	84	81	85	82	79	78
3	95	87	80	74	93	85	79	74	82	77	73	80	75	71	77	73	70	68
4	89	78	71	65	87	77	70	65	75	69	64	73	67	63	71	66	62	61
5	82	71	64	58	80	70	63	58	68	62	57	66	61	56	65	60	56	54
6	77	65	57	52	75	64	57	52	63	56	51	61	55	51	60	54	50	48
7	72	60	52	47	70	59	52	46	58	51	46	56	50	46	55	50	46	44
8	67	55	48	42	66	55	47	42	53	47	42	52	46	42	51	46	42	40
9	63	51	44	39	62	51	43	39	49	43	38	48	42	38	47	42	38	36
10	59	47	40	35	58	47	40	35	46	40	35	45	39	35	44	39	35	33

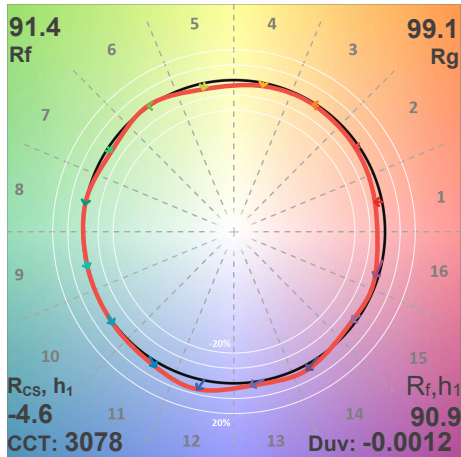
LAMPS (number of lamps)

## Luminaire Budgetary Diagram

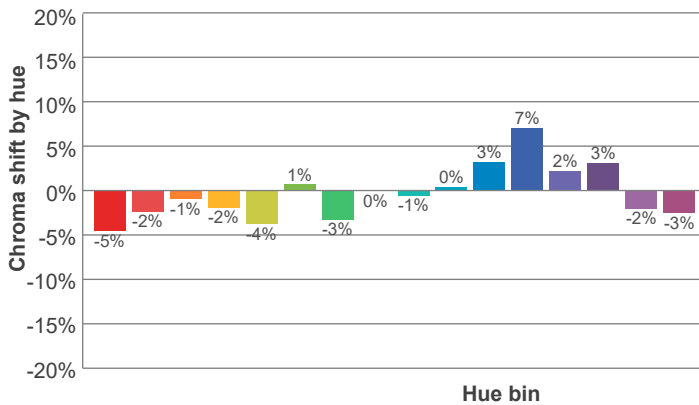
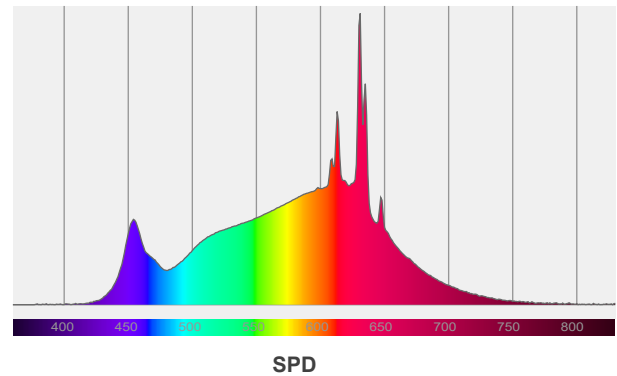
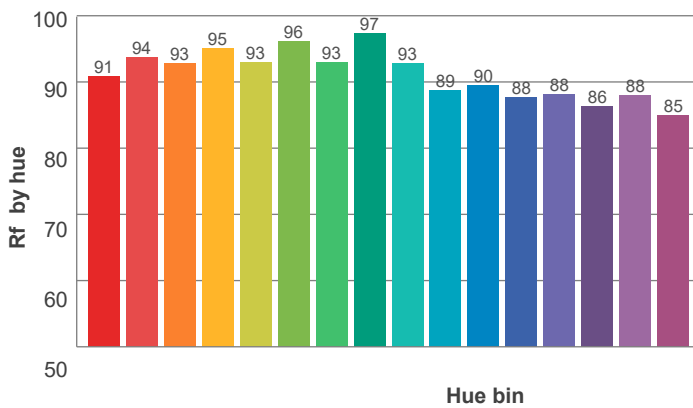
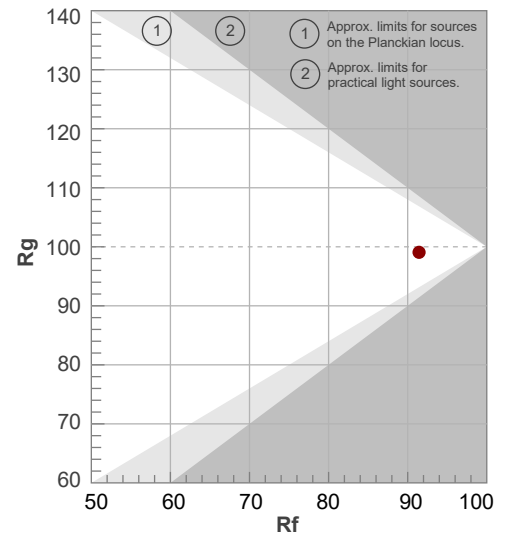


ANSI/IES TM-30-18

P: 2 / V: - / F: 2



Hue Bin	$R_f$	Shifts (%)	
		Chroma	Hue
1	91	-5%	1%
2	94	-2%	2%
3	93	-1%	3%
4	95	-2%	0%
5	93	-4%	2%
6	96	1%	1%
7	93	-3%	1%
8	97	0%	1%
9	93	-1%	5%
10	89	0%	7%
11	90	3%	7%
12	88	7%	-3%
13	88	2%	-9%
14	86	3%	-11%
15	88	-2%	-6%
16	85	-3%	-11%



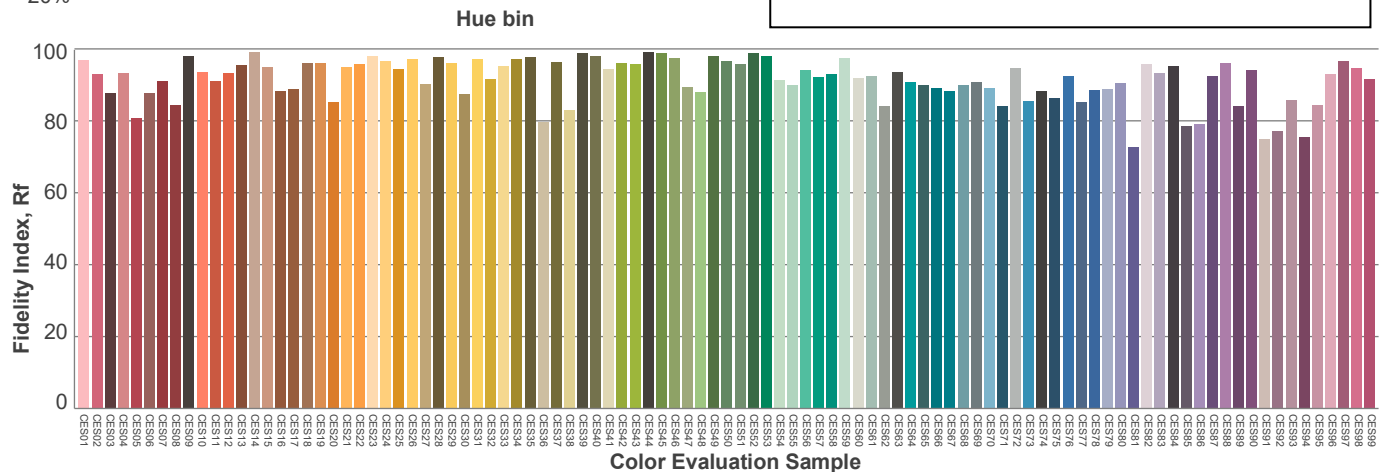
Red: 31.4%, Power=7.1mW

Blue: 11%, Power=9.5mW

Green: 27.3%, Power=17.2mW

UVA: 0%, Power=0.0mW

Dominant Wavelength: 584nm

1<sup>st</sup> Peak Wavelength: 631nm2<sup>nd</sup> Peak Wavelength: 613nm

### Glare Evaluation According to UGR

p Ceiling		70	70	50	50	30	70	70	50	50	30
p Walls		50	30	50	30	30	50	30	50	30	30
p Floor		20	20	20	20	20	20	20	20	20	20
Room size X      Y		Viewing direction at right angles to lamp axis					Viewing direction parallel to lamp axis				
2H	2H	22.6	23.6	22.8	23.9	24.1	22.6	23.6	22.8	23.9	24.1
	3H	23.0	24.1	23.4	24.3	24.5	23.0	24.1	23.4	24.3	24.5
	4H	23.3	24.3	23.7	24.5	24.8	23.3	24.3	23.7	24.5	24.8
	6H	23.5	24.4	23.8	24.6	25.0	23.5	24.4	23.8	24.6	25.0
	8H	23.5	24.4	23.9	24.7	25.1	23.5	24.4	23.9	24.7	25.1
	12H	23.5	24.3	23.9	24.7	25.1	23.5	24.3	23.9	24.7	25.1
4H	2H	22.7	23.7	23.1	24.0	24.2	22.7	23.7	23.1	24.0	24.2
	3H	23.5	24.3	23.8	24.6	25.0	23.5	24.3	23.8	24.6	25.0
	4H	23.7	24.5	24.2	24.9	25.4	23.7	24.5	24.2	24.9	25.4
	6H	24.0	24.7	24.5	25.1	25.5	24.0	24.7	24.5	25.1	25.5
	8H	24.1	24.8	24.6	25.1	25.5	24.1	24.8	24.6	25.1	25.5
	12H	24.1	24.7	24.6	25.1	25.5	24.1	24.7	24.6	25.1	25.5
8H	4H	23.9	24.5	24.4	24.9	25.2	23.9	24.5	24.4	24.9	25.2
	6H	24.2	24.7	24.7	25.2	25.7	24.2	24.7	24.7	25.2	25.7
	8H	24.4	24.8	24.9	25.3	26.0	24.4	24.8	24.9	25.3	26.0
	12H	24.5	24.8	25.0	25.3	25.9	24.5	24.8	25.0	25.3	25.9
12H	4H	23.8	24.4	24.3	24.8	25.3	23.8	24.4	24.3	24.8	25.3
	6H	24.3	24.7	24.8	25.2	25.8	24.3	24.7	24.8	25.2	25.8
	8H	24.4	24.8	25.0	25.3	25.9	24.4	24.8	25.0	25.3	25.9
Variation of the observer position for the luminaire distance S											
S = 1.0H		0.3 / -0.6					0.3 / -0.6				
S = 1.5H		1.0 / -1.3					1.0 / -1.3				
S = 2.0H		2.1 / -1.8					2.1 / -1.8				
Standard table		n/a					n/a				
Correction summand		n/a					n/a				
Corrected glare indices referring to 1441 lm total luminous flux											